



HADDONSTONE

MATERIAL DATA SHEET

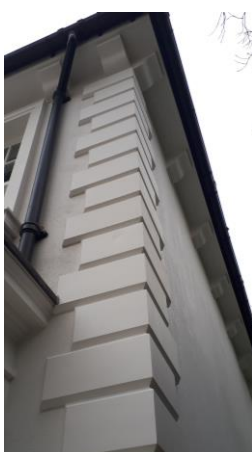
TecLite®

GRC MATERIAL

Samples marked "L"

Haddonstone Ltd., The Forge House, Church Lane, East Haddon, Northampton, NN6 8DB, UK.

Tel: +44(0)1604 770711, Email: info@haddonstone.co.uk, Web: www.haddonstone.com



Haddonstone "TecLite"® Glassfibre Reinforced Concrete (GRC) - wet cast cement based mix containing fine silica sand and alkali resistant (AR) glassfibre to produce a finished material which benefits from a high strength to weight ratio. These aggregates and fibres are mixed with white cement as the binder plus specialised admixtures and cement pigments if colours other than Portland are required. The consistency of the mix achieved is fluid to penetrate into all the fine details of the mould.

While the finished material closely resembles traditional cast stone and natural stone, the component weight is reduced by approximately two thirds by design, making it ideal for retro fit applications, timber frame buildings, or new build projects where weight is an issue.

Criteria	Technical Performance
Trade Name	Haddonstone "TecLite"®
Manufacturer	Haddonstone Ltd, The Forge House, East Haddon, Northampton, NN6 8DB
Material Density	2,000 kg/m ³
Compressive Strength	Minimum Compressive Cube Strength at 28 days is greater than 45 N/mm ² (MPa)
Aggregate	Grade 60 Dry Silica Sand
Finish	Light Acid Etched
Fire Rating	Non-Flammable, Non-Combustible, does not give off Toxic Gases Reaction to Fire: Euroclass A1
Handling Reinforcement Specification	Glassfibre Reinforcement
Cast In Lifting Sockets available	Not applicable
Cast In Fixings available	Yes (on request) - Stainless Steel to BS EN 1090 and CE Marked
Tensile (Pull-Out) Test	e.g. Results with M12x40mm cast in bent end socket: Proof Load 2kN: Ultimate Failure load was 17kN Suitable Factors of Load should be applied
Structural Reinforcement available	No (not applicable to GRC)
Colours Available	Portland, Bath, Ivory Limestone, Slate, Terracotta, Coade (special colour match service also available)

Testing is carried out externally by independent laboratories in accordance with GRCA standards.

For a full list of standards please refer to International Glassfibre Reinforced Concrete Association (GRCA) specification.

This Technical Data Sheet was produced by Haddonstone Ltd, The Forge House, East Haddon, Northampton, NN6 8DB, United Kingdom. At the time of publication all information to our knowledge is specified correctly. The company reserves the right to change the specification of the product at any time without prior notice to third parties.

Issue Date 08/02/2022