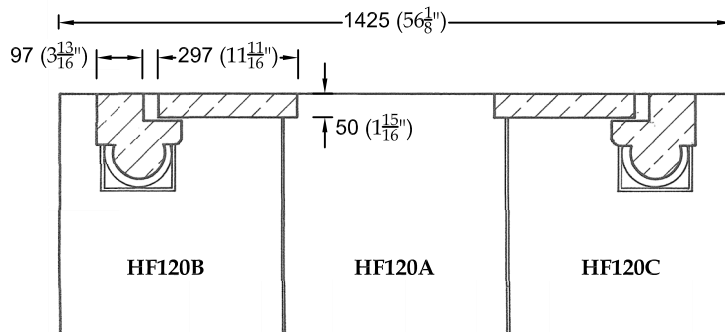
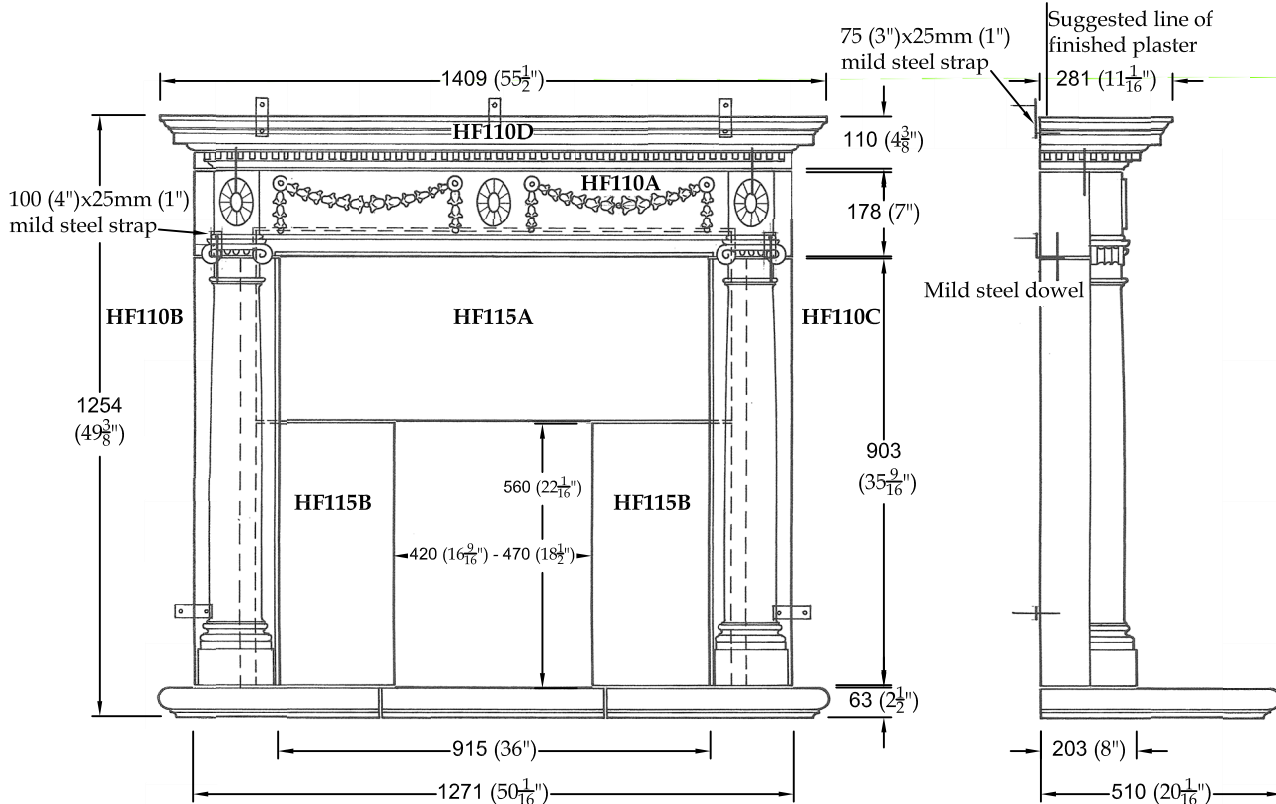




ADAM FIREPLACE HF110



SECTION

HF110 COMPONENT LISTING		WEIGHTS
HF110A	Mantel	61 kg (134 lbs)
HF110B	Left hand leg	44 kg (97 lbs)
HF110C	Right hand leg	44 kg (97 lbs)
HF110D	Top mantel	82 kg (181 lbs)
HF120 COMPONENT LISTING		
HF120A	Hearth centre	35 kg (77 lbs)
HF120B	Hearth left hand	35 kg (77 lbs)
HF120C	Hearth right hand	35 kg (77 lbs)
HF115 COMPONENT LISTING		
HF115A	Slip mantel	46 kg (101 lbs)
HF115B	Slip leg (2 required)	19 kg (42 lbs) each

X980A Fireplace installation pack available separately (see price list for details)

INSTALLATION RECOMMENDATIONS:

1. Bed hearth blocks (if used) onto existing floor with a 1:1:6 mortar
2. Bed fireplace legs, securing to wall using 75mm (3")x25mm (1") and 100mm (4")x25mm (1") mild steel straps as indicated and 1:1:6 mortar or Evo-Stik Sticks Like, Loctite Fast Grab or similar
3. Pin and bed mantel to legs using Ø6mm (1/4") 100mm (4") mild steel dowels and tie to wall using 75mm (3")x25mm (1") mild steel straps as indicated and 1:1:6 mortar or Evo-Stik Sticks Like, Loctite Fast Grab or similar

Plug and screw mild steel straps using 2" No.10 countersunk screws

Position and secure slips (if used) to suit site conditions, adjusting to suit desired opening. Slips not designed for use in conjunction with open fires unless backed by a suitable fire-resistant construction. Suitable heat resistant floor to be supplied by others

BEDDING JOINTS - Use 1:1:6 cement/lime/sand mortar

POINTING - Joints should be pointed using proprietary TecStone pointing mix in accordance with the recommended instructions

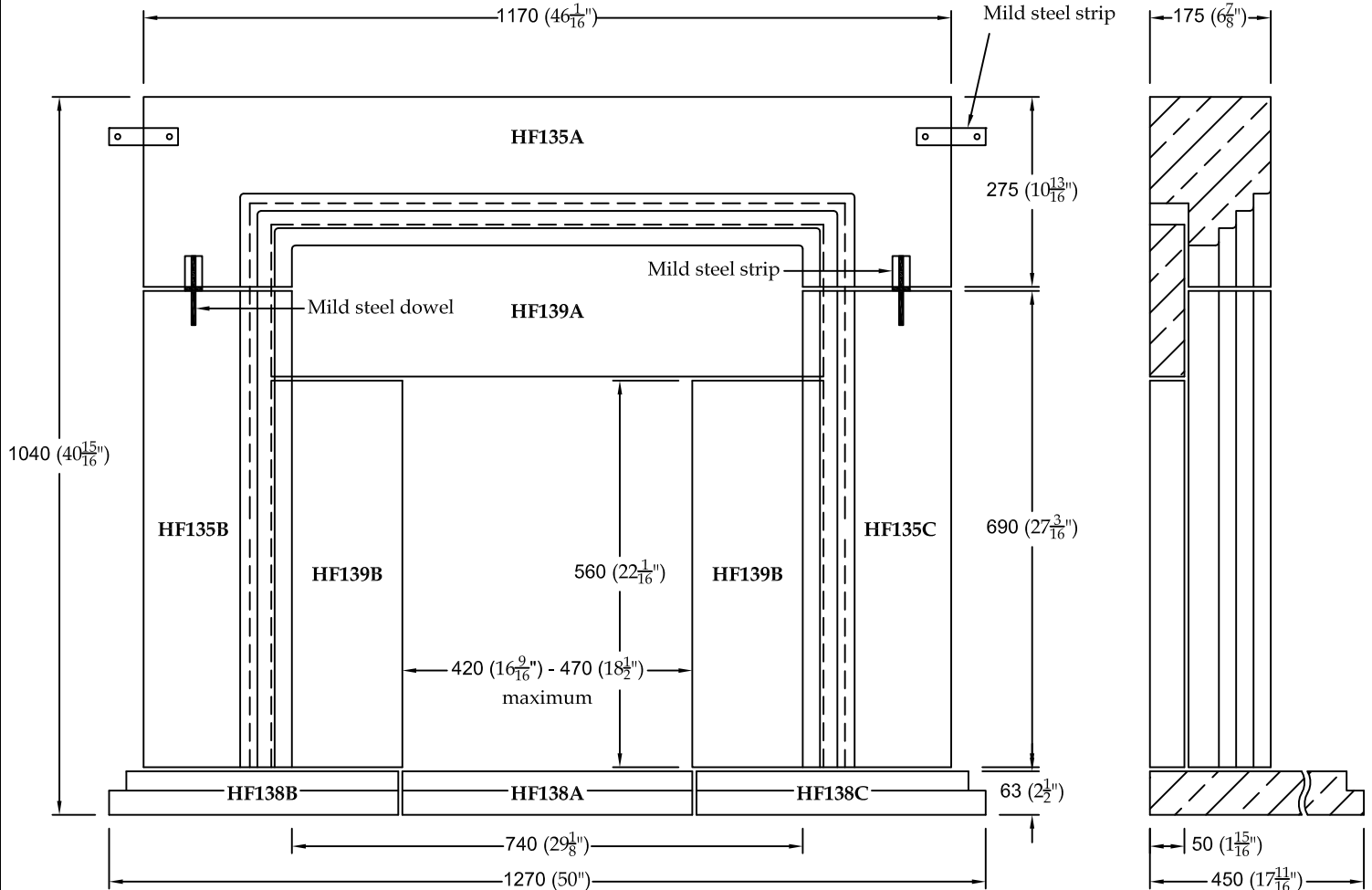
Please advise requirements for TecStone pointing mix, if any, at time of placing order
Or use 1:1:6 cement/lime/sand colour-toned to suit (white cement may be necessary)

Unless otherwise stated, all materials other than stonework to be supplied by others

All dimensions exclude joints - allow 6mm (1/4") for vertical and bedding joints



DECO FIREPLACE HF135



INSTALLATION RECOMMENDATIONS:

1. Bed hearth blocks (if used) onto existing floor with a 1:1:6 mortar
2. Secure both legs to the wall using a 100mm (4")x25mm (1") flat mild steel strip as indicated and a 1:1:6 mortar or Evo-Stik Sticks Like, Loctite Fast Grab, or similar
3. Pin and bed mantel to legs using Ø6mm (1/4") 100mm (4") mild steel dowels and tie to wall with 100mm (4")x25mm (1") flat mild steel strip as indicated and a 1:1:6 mortar or Evo-stik Sticks Like, Loctite Fast Grab, or similar

Plug and screw mild steel strips using 50mm (2") No. 10 countersunk screws

Position and secure slips (if used) to suit site conditions. Slips not designed for use in conjunction with open fires unless backed by a suitable fire-resistant construction Suitable heat resistant floor to be supplied by others

BEDDING JOINTS - Use 1:1:6 cement/lime/sand mortar

POINTING - Joints should be pointed using our proprietary TecStone pointing mix in accordance with the recommended instructions
Please advise requirements for TecStone pointing mix, if any, at time of placing order
Or use 1:1:6 cement/lime/sand colour-toned to suit (white cement may be necessary)

All dimensions exclude joints - allow 6mm (1/4") for vertical and bedding joints

HF135 COMPONENT LISTING

HF135A Mantel (for slips)

HF135B L/H Leg (for slips)

HF135C R/H Leg (for slips)

WEIGHTS

86 kg (190 lbs)

43 kg (95 lbs)

43 kg (95 lbs)

HF139 COMPONENT LISTING

HF139A Slip mantel

HF139B Slip leg (2 required)

30 kg (66 lbs)

16 kg (35 lbs) each

HF138 COMPONENT LISTING

HF138A Hearth centre

HF138B Hearth L/H

HF138C Hearth R/H

27 kg (60 lbs)

27 kg (60 lbs)

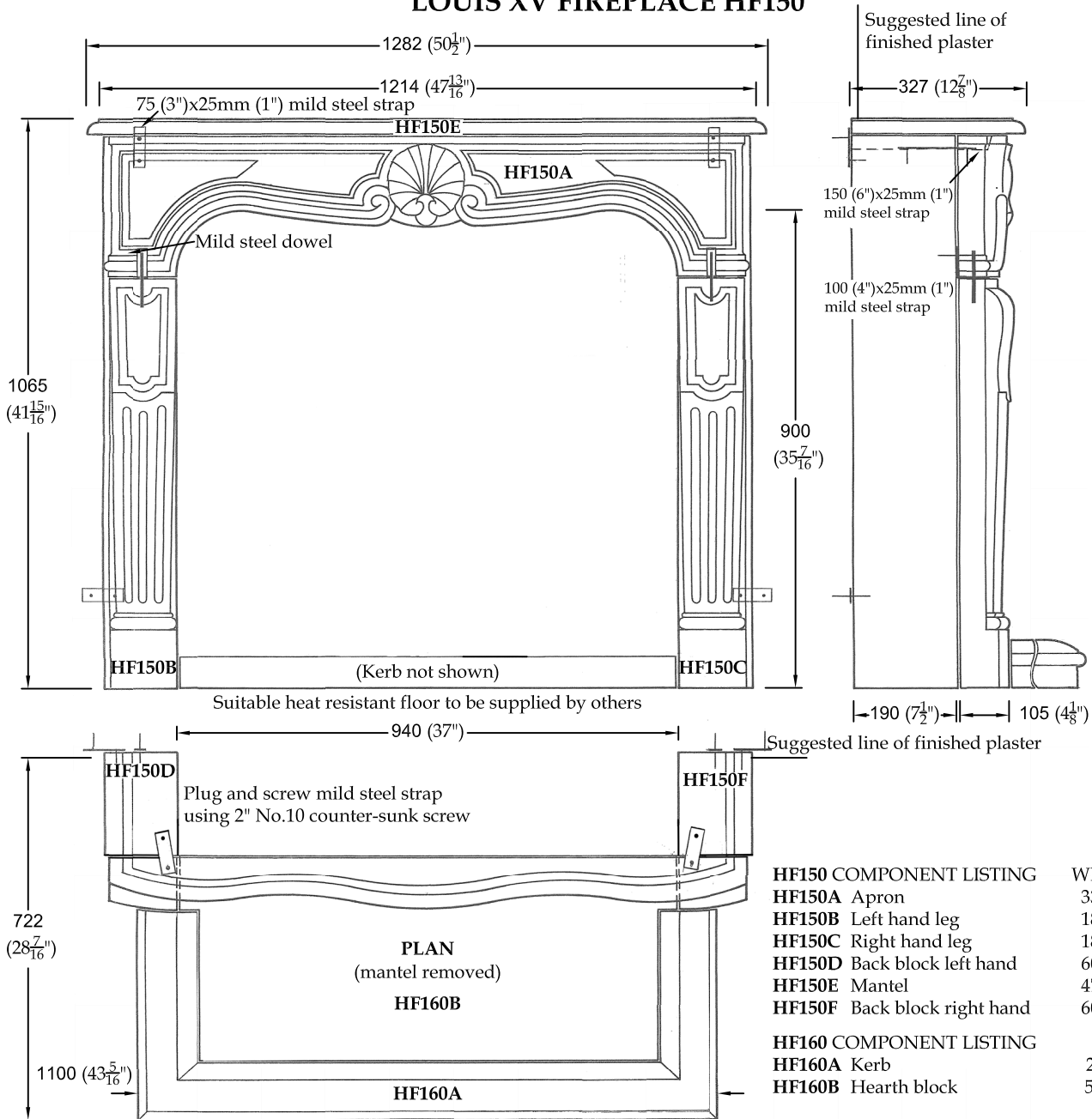
27 kg (60 lbs)

Unless otherwise stated, all materials other than stonework to be supplied by others

X980A Fireplace installation pack available separately (see price list for details)



LOUIS XV FIREPLACE HF150



HF150 COMPONENT LISTING		WEIGHTS
HF150A	Apron	33 kg (73 lbs)
HF150B	Left hand leg	18 kg (40 lbs)
HF150C	Right hand leg	18 kg (40 lbs)
HF150D	Back block left hand	60 kg (132 lbs)
HF150E	Mantel	47 kg (104 lbs)
HF150F	Back block right hand	60 kg (132 lbs)
HF160 COMPONENT LISTING		
HF160A	Kerb	29 kg (64 lbs)
HF160B	Hearth block	53 kg (117 lbs)

INSTALLATION RECOMMENDATIONS:

1. Bed hearth blocks (if used) onto existing floor with a 1:1:6 mortar
2. Secure back blocks to wall using 75 (3")x25mm (1") flat mild steel strap as indicated and 1:1:6 mortar or Evo-Stik Sticks Like, Loctite Fast Grab or similar
3. Secure legs to back blocks using 100 (4")x25mm (1") flat mild steel strap as indicated 1:1:6 mortar or Evo-Stik Sticks Like, Loctite Fast Grab or similar
4. Pin and bed apron onto legs using Ø6mm (1/4") 100mm (4") mild steel dowels and tie to back blocks with 150 (6")x25mm (1") flat mild steel straps as indicated and 1:1:6 mortar or Evo-Stik Sticks Like, Loctite Fast Grab or similar. Bed mantel onto back blocks and apron with 1:1:6 mortar or Evo-Stik Sticks Like, Loctite Fast Grab or similar

BEDDING JOINTS - Use 1:1:6 cement/lime/sand mortar

POINTING - Joints should be pointed using proprietary TecStone pointing mix in accordance with the recommended instructions

Please advise requirements for TecStone pointing mix, if any, at time of placing order
Or use 1:1:6 cement/lime/sand colour-toned to suit (white cement may be necessary)

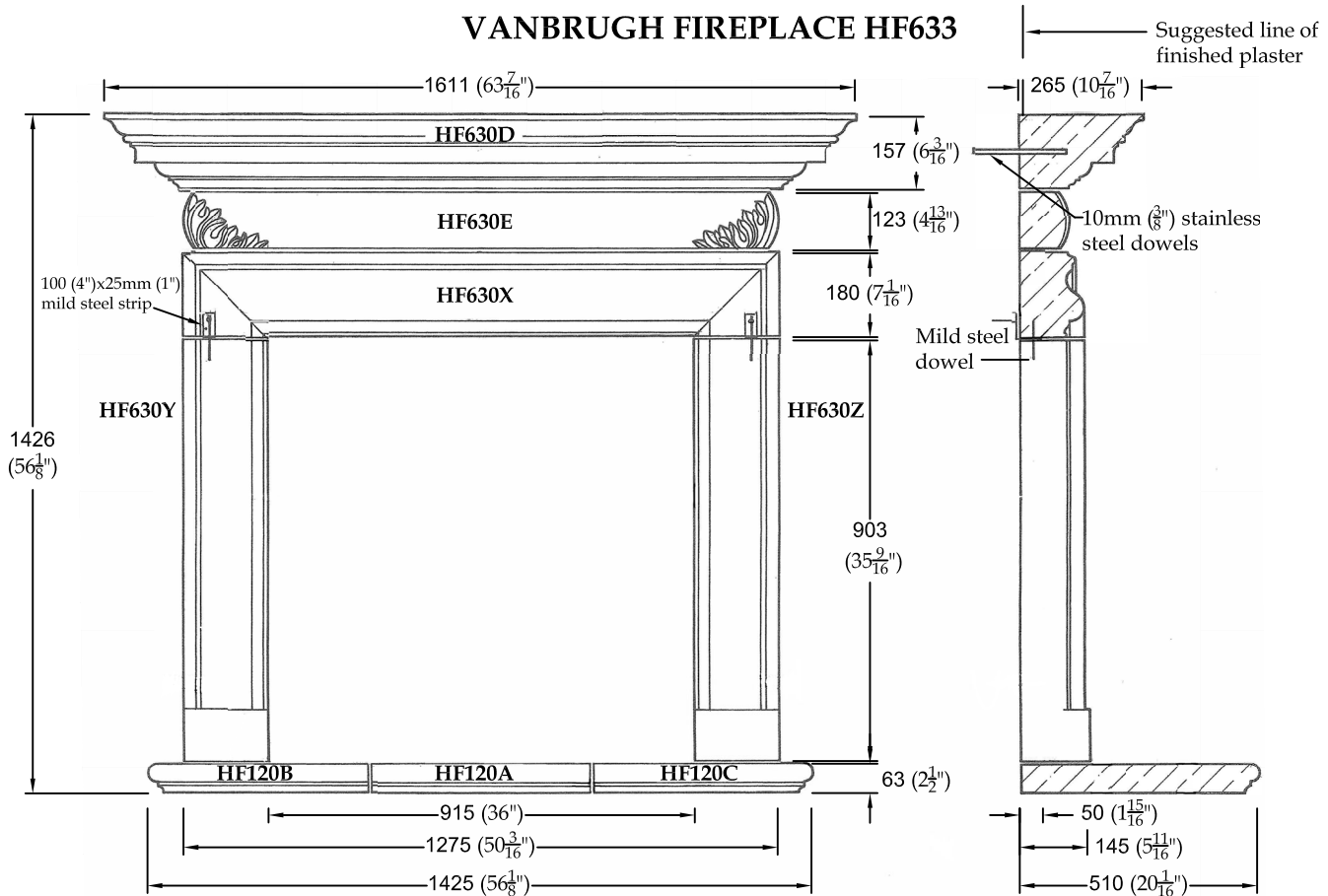
Unless otherwise stated, all materials other than stonework to be supplied by others

All dimensions exclude joints - allow 6mm (1/4") for vertical and bedding joints

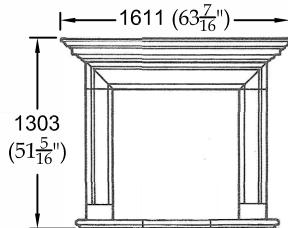
X980 Fireplace installation pack available separately
(see price list for details)



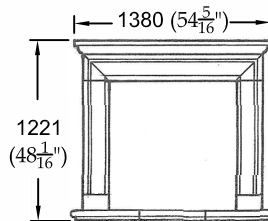
VANBRUGH FIREPLACE HF633



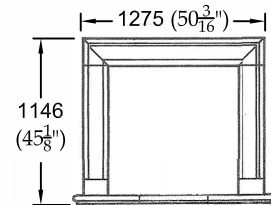
All the fireplaces options are shown with hearths



VANBRUGH FIREPLACE HF634



VANBRUGH FIREPLACE HF637



VANBRUGH FIREPLACE HF635

INSTALLATION RECOMMENDATIONS:

1. Bed hearth blocks (if used) onto existing floor with a 1:1:6 mortar
2. Bed fireplace legs, securing to wall using 100mm (4")x25mm (1") mild steel straps as indicated and 1:1:6 mortar or Evo-Stik Sticks Like, Loctite Fast Grab or similar.
3. Pin and bed mantel to legs using Ø6mm (1/4") 100mm (4") mild steel dowels and 1:1:6 mortar or Evo-Stik Sticks Like, Loctite Fast Grab or similar.
4. Place middle mantel in position ensuring continuous bedding using 1:1:6 mortar or Evo-Stik Sticks Like, Loctite Fast Grab or similar.
5. Drill and secure top mantel to wall using 3 No. Ø10mm stainless steel dowels and 1:1:6 mortar or Evo-Stik Sticks Like, Loctite Fast Grab or similar.

Plug and screw mild steel straps using 2" No.10 countersunk screws.

BEDDING JOINTS - Use 1:1:6 cement/lime/sand mortar.

POINTING - Joints should be pointed using proprietary TecStone pointing mix in accordance with the recommended instructions. Please advise requirements for TecStone pointing mix at time of placing order, or use 1:1:6 cement/lime/sand colour-toned to suit (white cement may be necessary).

Unless otherwise stated, all materials other than stonework to be supplied by others.

All dimensions exclude joints - allow 6mm (1/4") for vertical and bedding joints.

HF633 COMPONENT LISTING

WEIGHTS

HF630X	Lower mantel	45 kg (99 lbs)
HF630Y	Left hand leg	32 kg (71 lbs)
HF630Z	Right hand leg	32 kg (71 lbs)
HF630D	Top mantel	112 kg (247 lbs)
HF630E	Middle mantel	33 kg (73 lbs)

HF634 MANTEL REFERENCE

HF630D	Top mantel	112 kg (247 lbs)
--------	------------	------------------

HF637 MANTEL REFERENCE

HF630F	Small mantel	32 kg (70 lbs)
--------	--------------	----------------

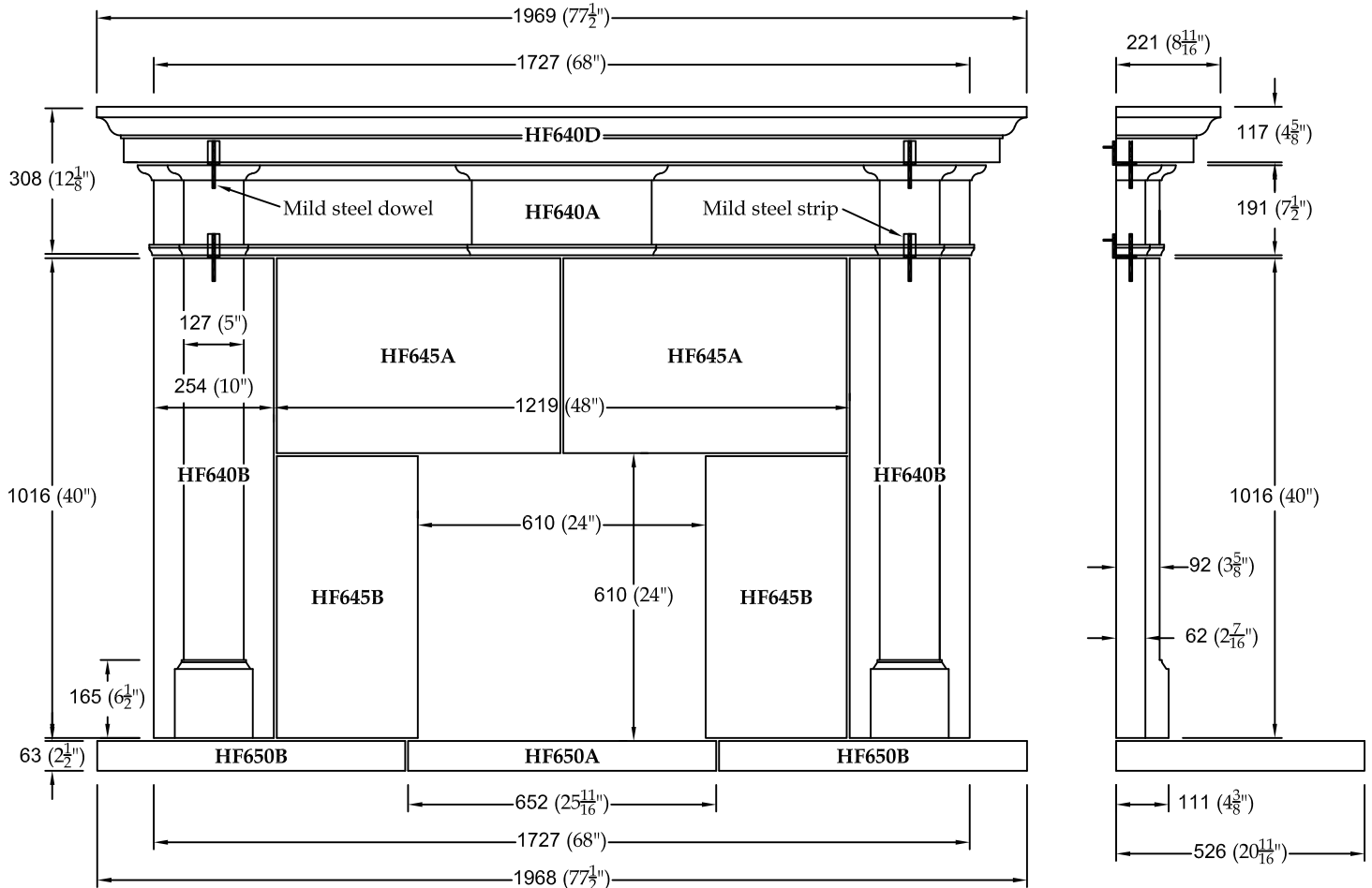
HF120 COMPONENT LISTING

HF120A	Hearth centre	35 kg (77 lbs)
HF120B	Hearth left hand	35 kg (77 lbs)
HF120C	Hearth right hand	35 kg (77 lbs)

X980A Fireplace installation pack available separately (see price list for details)



CLASSIC FIREPLACE HF640



INSTALLATION RECOMMENDATIONS:

1. Bed hearth blocks (if used) onto existing floor with a 1:1:6 mortar
2. Secure both legs to the wall using a 100mm (4")x25mm (1") flat mild steel strip as indicated and a 1:1:6 mortar or Evo-Stik Sticks Like, Loctite Fast Grab, or similar
3. Pin and bed mantel to legs using Ø6mm (1/4") 100mm (4") mild steel dowels and tie to wall with 100mm (4")x25mm (1") flat mild steel strip as indicated and a 1:1:6 mortar or Evo-Stik Sticks Like, Loctite Fast Grab, or similar
4. Pin and bed mantelshelf to mantel using Ø6mm (1/4") 100mm (4") mild steel dowels and tie to wall with 100mm (4")x25mm (1") flat mild steel strip as indicated and a 1:1:6 mortar or Evo-Stik Sticks Like, Loctite Fast Grab, or similar

Plug and screw mild steel strips using 50mm (2") No. 10 countersunk screws

Position and secure slips (if used) to suit site conditions. Slips not designed for use in conjunction with open fires unless backed by a suitable fire-resistant construction. Suitable heat resistant floor to be supplied by others.

BEDDING JOINTS - Use 1:1:6 cement/lime/sand mortar

POINTING - Joints should be pointed using our proprietary TecStone pointing mix in accordance with the recommended instructions.

Please advise your requirements for TecStone pointing mix, if any, at time of placing order.

Or use 1:1:6 cement/lime/sand colour-toned to suit (white cement may be necessary).

All dimensions exclude joints - allow 6mm (1/4") for vertical and bedding joints.

HF640 COMPONENT LISTING

- HF640D** Mantel
HF640A Apron
HF640B Legs (2 required)

WEIGHTS

- 50 kg (110 lbs)
 28 kg (62 lbs)
 22 kg (49 lbs) each

HF645 COMPONENT LISTING

- HF645A** Slip mantel (2 required)
HF645B Slip leg (2 required)

- 29 kg (64 lbs) each
 21 kg (46 lbs) each

HF650 COMPONENT LISTING

- HF650A** Hearth centre piece
HF650B Hearth end piece (2 required)

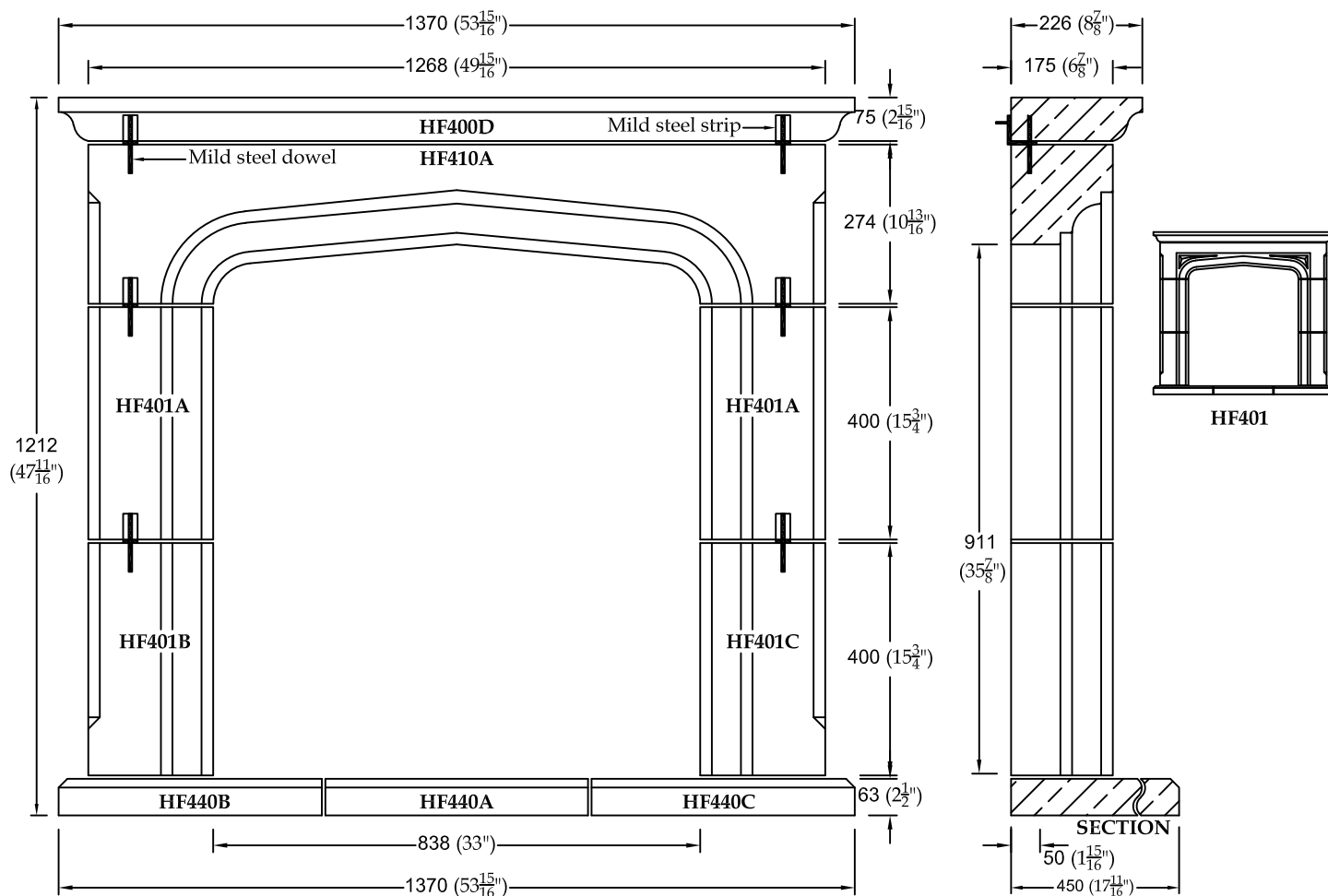
- 32 kg (71 lbs)
 32 kg (71 lbs) each

Unless otherwise stated, all materials other than stonework to be supplied by others.

X980A Fireplace installation pack available separately (see price list for details)



TALL MANOR FIREPLACE HF401 & HF411



INSTALLATION RECOMMENDATIONS:

1. Bed hearth blocks (if used) onto existing floor with a 1:1:6 mortar
2. Secure both legs to the wall using a 100mm (4")x25mm (1") flat mild steel strip as indicated and 1:1:6 mortar or Evo-Stik Sticks Like, Loctite Fast Grab, or similar
3. Pin and bed mantel to legs using Ø6mm (1/4") 100mm (4") mild steel dowels and tie to wall with 100mm (4")x25mm (1") flat mild steel strip as indicated and a 1:1:6 mortar or Evo-Stik Sticks Like, Loctite Fast Grab, or similar
4. Pin and bed mantelshelf to mantel using Ø6mm (1/4") 100mm (4") mild steel dowels and 1:1:6 mortar or Evo-Stik Sticks Like, Loctite Fast Grab, or similar

Plug and screw mild steel strips using 2" No. 10 countersunk screws

BEDDING JOINTS - Use 1:1:6 cement/lime/sand mortar

POINTING - Joints should be pointed using our proprietary TecStone pointing mix in accordance with the recommended instructions

Please advise your requirements for TecStone pointing mix, if any, at time of placing order

Or use 1:1:6 cement/lime/sand colour-toned to suit (white cement may be necessary)

All dimensions exclude joints - allow 6mm (1/4") for vertical and bedding joints

HF401 COMPONENT LISTING

	WEIGHTS
HF400A Mantel	97 kg (214 lbs)
HF401B Left hand leg	29 kg (62 lbs)
HF401C Right hand leg	29 kg (62 lbs)
HF401A Plain ended leg (2 required)	29 kg (64 lbs) each
HF400D Mantelshelf	48 kg (106 lbs)

HF440 COMPONENT LISTING

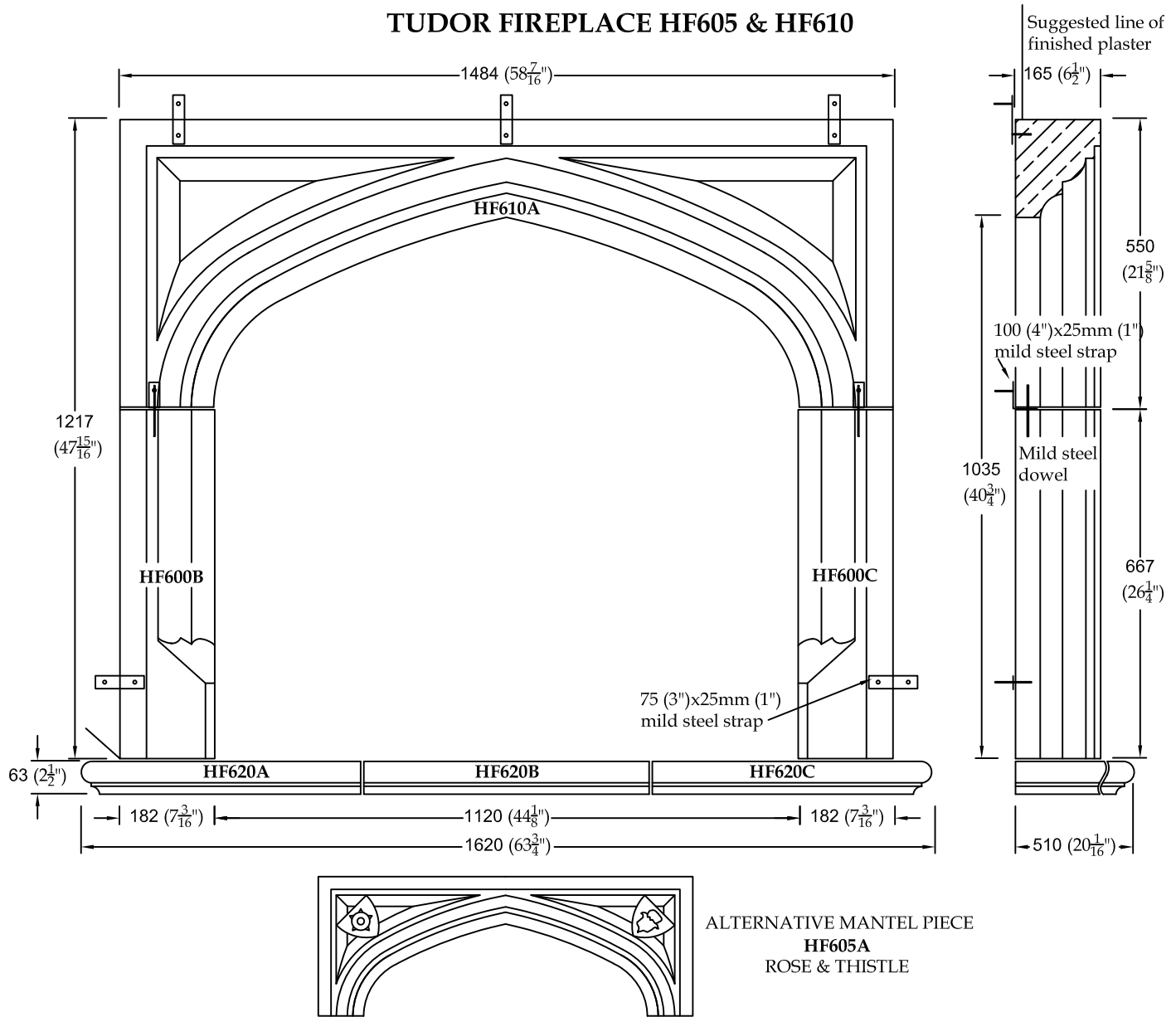
HF440A Hearth centre piece	28 kg (62 lbs)
HF440B Hearth left hand end piece	28 kg (62 lbs)
HF440B Hearth right hand end piece	28 kg (62 lbs)
HF4A Back Hearth	46kg (101 lbs)

Unless otherwise stated, all materials other than stonework to be supplied by others

X980A Fireplace installation pack available separately (see price list for details)



TUDOR FIREPLACE HF605 & HF610



INSTALLATION RECOMMENDATIONS:

1. Bed hearth blocks (if used) onto existing floor with a 1:1:6 mortar
2. Secure both legs to wall using 75 (3")x25mm (1") and 100 (4")x25mm (1") flat mild steel straps as indicated and 1:1:6 mortar or Evo-Stik Sticks Like, Loctite Fast Grab or similar
3. Pin and bed mantel piece to legs using using Ø6mm (1/4") 100mm (4") mild steel dowels and tie to wall with 75 (3")x25mm (1") flat mild steel strap as indicated and 1:1:6 mortar or Evo-Stik Sticks Like, Loctite Fast Grab or similar

Suitable heat resistant floor to be supplied by others

BEDDING JOINTS - Use 1:1:6 cement/lime/sand mortar

POINTING - Joints should be pointed using proprietary TecStone pointing mix in accordance with the recommended instructions

Please advise requirements for TecStone pointing mix, if any, at time of placing order Or use 1:1:6 cement/lime/sand colour-toned to suit (white cement may be necessary)

Unless otherwise stated, all materials other than stonework to be supplied by others

All dimensions exclude joints - allow 6mm (1/4") for vertical and bedding joints

HF600 COMPONENT LISTING

	WEIGHTS
HF610A Mantelpiece (shown)	160 kg (353 lbs)
HF600B Left hand leg	36 kg (79 lbs)
HF600C Right hand leg	36 kg (79 lbs)

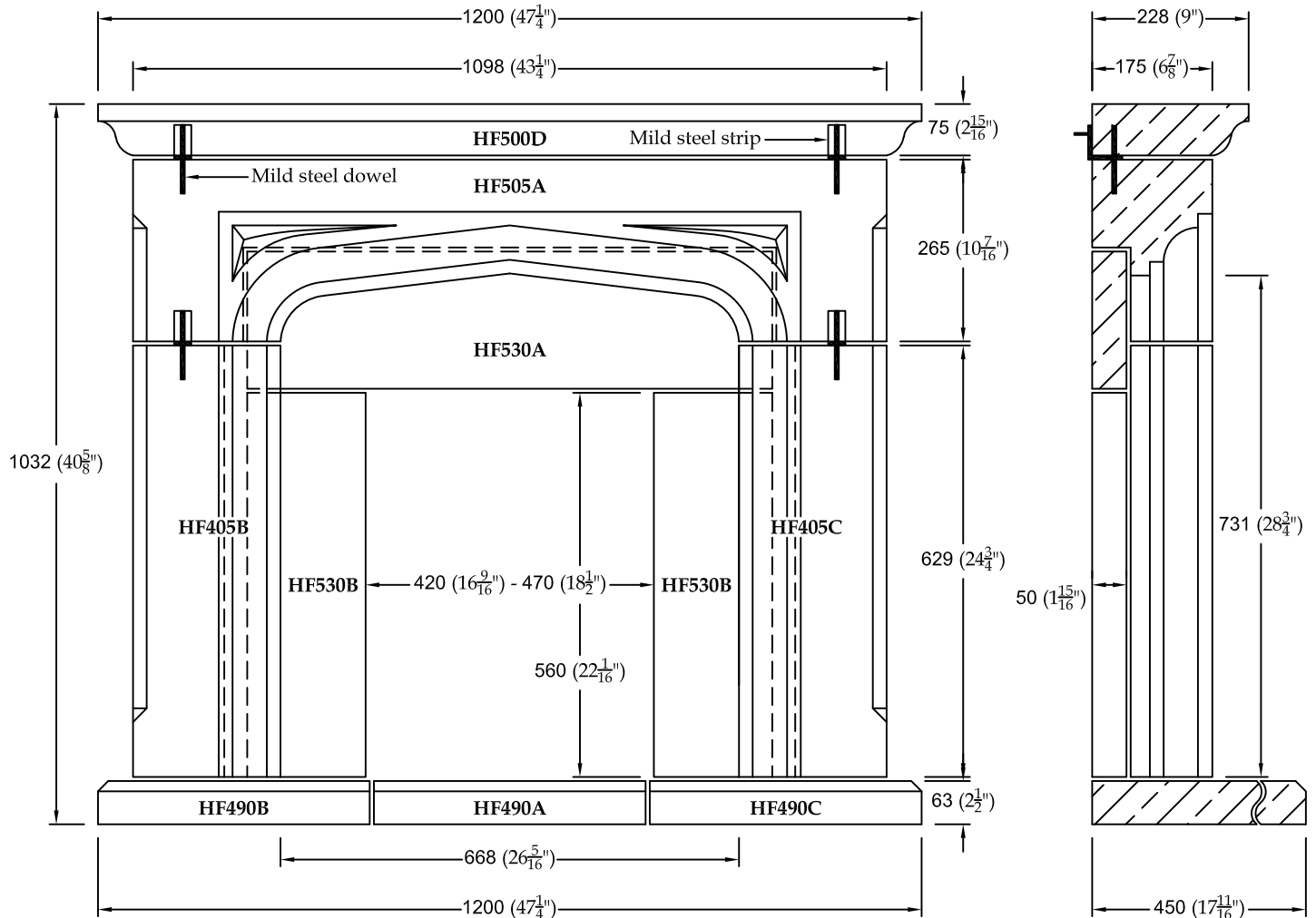
HF620 COMPONENT LISTING

HF620A Hearth centre	40 kg (88 lbs)
HF620B Hearth left hand	40 kg (88 lbs)
HF620C Hearth right hand	40 kg (88 lbs)

X980A Fireplace installation pack available separately (see price list for details)



MANOR HOUSE FIREPLACE HF505



INSTALLATION RECOMMENDATIONS:

1. Bed hearth blocks (if used) onto existing floor with a 1:1:6 mortar
2. Secure both legs to the wall using a 100mm (4")x25mm (1") flat mild steel strip as indicated and a 1:1:6 mortar or Evo-Stik Sticks Like, Loctite Fast Grab, or similar
3. Pin and bed mantel to legs using Ø6mm (1/4") 100mm (4") mild steel dowels and tie to wall with 100mm (4")x25mm (1") flat mild steel strip as indicated and a 1:1:6 mortar or Evo-Stik Sticks Like, Loctite Fast Grab, or similar
4. Pin and bed mantelshelf to mantel using Ø6mm (1/4") 100mm (4") mild steel dowels and 1:1:6 mortar or Evo-Sticks Like, Loctite Fast Grab, or similar

Plug and screw mild steel strips using 2" No. 10 countersunk screws

Position and secure slips (if used) to suit site conditions. Slips not designed for use in conjunction with open fires unless backed by a suitable fire-resistant construction. Suitable heat resistant floor to be supplied by others

BEDDING JOINTS - Use 1:1:6 cement/lime/sand mortar

POINTING - Joints should be pointed using our proprietary TecStone pointing mix in accordance with the recommended instructions
Please advise requirements for TecStone pointing mix, if any, at time of placing order
Or use 1:1:6 cement/lime/sand colour-toned to suit (white cement may be necessary)

All dimensions exclude joints - allow 6mm (1/4") for vertical and bedding joints

HF505 COMPONENT LISTING

HF505A Mantel (for slips)	74 kg	(163 lbs)
HF405B L/H Leg (for slips)	44 kg	(97 lbs)
HF405C R/H Leg (for slips)	44 kg	(97 lbs) each
HF500D Mantelshelf	42 kg	(93 lbs)

HF530 COMPONENT LISTING

HF530A Slip mantel	17 kg	(37 lbs)
HF530B Slip leg (2 required)	10 kg	(22 lbs) each

HF490 COMPONENT LISTING

HF490A Hearth centre	24 kg	(53 lbs)
HF490B Hearth L/H	24 kg	(53 lbs)
HF490C Hearth R/H	24 kg	(53 lbs)

Unless otherwise stated, all materials other than stonework to be supplied by others

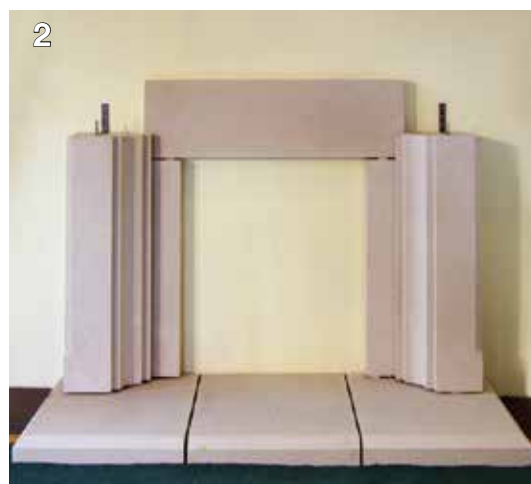
X980A Fireplace installation pack available separately (see price list for details)



To be read in conjunction with relevant Fireplace Tech Sheets and Pointing Recommendations. Each fireplace is typically supplied in component form: ie legs, mantel, mantel shelf, optional hearth blocks and optional slip blocks. Shown is the Manor House Chimney Piece HF505. Unless otherwise stated, all materials other than the stonework are to be supplied by others. Consult a qualified builder or installer to ensure all relevant Building Regulations/Codes are adhered to prior to installation of a fireplace.



The hearth blocks should be bedded on a suitable base using a 1:1:6 cement/lime/sand mortar. All joints would normally be 6mm (1/4") with the mortar slightly recessed from the surface of the stonework to allow for pointing after the fireplace is installed.



Mark out the required position of the fireplace legs and the optional slips to suit your fireplace and fire opening. Attach both legs to wall using 100 x 25mm (4" x 1") mild steel straps as shown and bed on 1:1:6 cement/lime/sand mortar. Install the slip blocks with a proprietary resin mortar at the required spacing.



Attach mantel to wall using 100 x 25mm (4" x 1") mild steel straps and pin and bed mantel to legs using 6mm Ø (1/4") 100mm (4") long mild steel dowels on a 1:1:6 cement/lime/sand mortar. Repeat this process for the mantel shelf.



The fireplace is then ready for pointing. For details refer to the Pointing Recommendations Sheet.

Haddonstone Ltd

The Forge House, East Haddon, Northampton NN6 8DB, England
Telephone: 01604 770711 Fax: 01604 770027 info@haddonstone.co.uk

Haddonstone (USA) Ltd

32207 United Avenue, Pueblo, CO 81001, USA
Telephone: 719 948 4554 Fax: 719 948 4285 stone@haddonstone.com

www.haddonstone.com

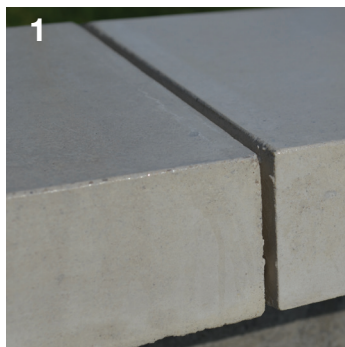


HADDONSTONE

TECSTONE POINTING RECOMMENDATIONS

Required: pointing mix, pointing trowel, masking tape (if required), mixing bowl, water, sponge.

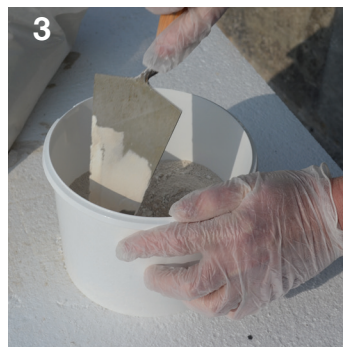
Please note: all text and photographs relate to TecStone pointing mix.



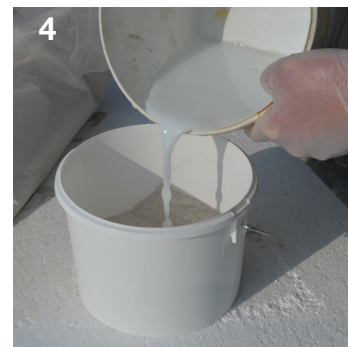
1
Before pointing ensure each 6mm ($\frac{1}{4}$ ") joint is free from loose particles. Avoid pointing in extreme conditions, particularly wet and cold.



2
The TecStone pointing mix is supplied as separately bagged cement and aggregate with an information leaflet.



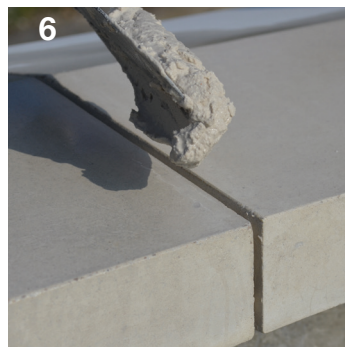
3
The cement and aggregate should first be mixed together dry in the ratio of 1 part cement to 4.5-6.5 parts aggregate.



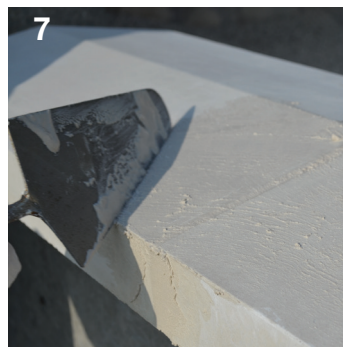
4
Carefully add small quantities of water to the TecStone pointing mix, mixing thoroughly to ensure the water is fully dispersed. *See note below.



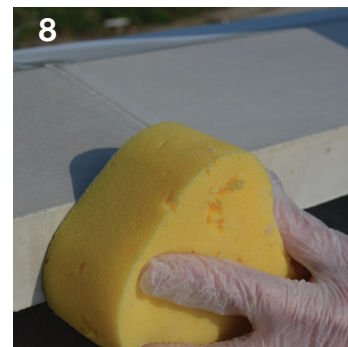
5
The TecStone pointing mix is ready to use when it has the consistency of putty. *See note below.



6
Scoop the mix into the joint, pressing with a trowel to ensure an even fill.



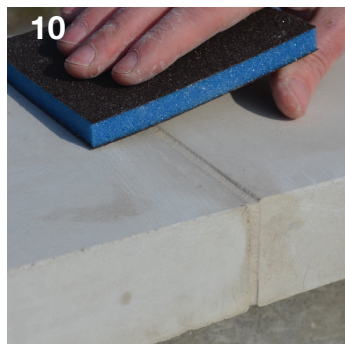
7
Smooth the pointing mix to the profile of the stone, removing any excess pointing mix.



8
Wipe over the surface of the joint and surrounding area with a dampened sponge to remove all surplus pointing material off the surrounding areas and ensure a flush finish to the joint.



9
If necessary trowel over the joint once more to ensure a flush finish.



10
Any mix residue may be rubbed away with fine abrasive paper 2-3 days after completion.



11
The finished joint.

* NOTE: It would be advantageous to use a waterproofing additive in the mixing water (SBR or other proprietary mortar admixture). The use of too much water can lead to the pointing mix colour and texture becoming unsightly, and the possibility of the mix bleeding into the adjacent cast stone.

Haddonstone Ltd

The Forge House, East Haddon, Northampton NN6 8DB, England
Telephone: 01604 770711 Fax: 01604 770027 info@haddonstone.co.uk

Haddonstone (USA) Ltd

32207 United Avenue, Pueblo, CO 81001, USA
Telephone: 719 948 4554 Fax: 719 948 4285 stone@haddonstone.com

www.haddonstone.com