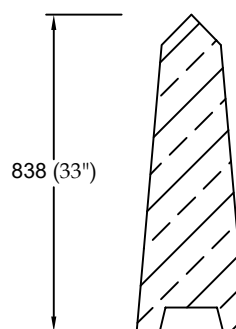
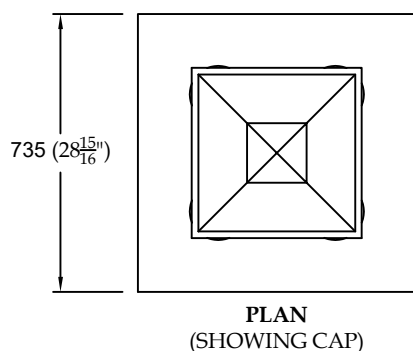
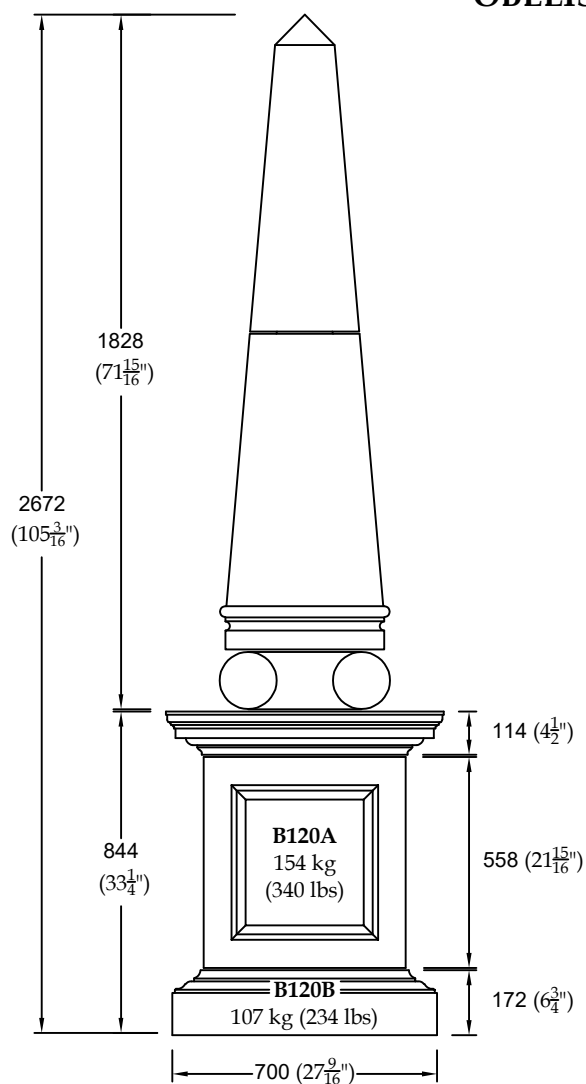




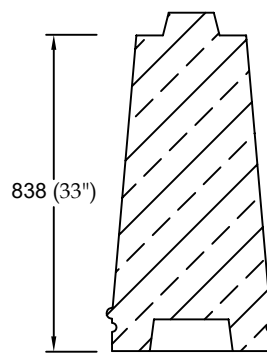
## TECHNICAL SPECIFICATION SHEET

# M20

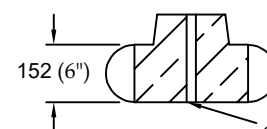
## OBELISK E550




**E550A**  
71 kg  
(157 lbs)

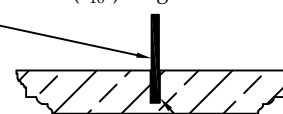


**E550B**  
201 kg  
(443 lbs)



E550C  
28 kg  
(62 lbs)

**X730A** Ø20mm ( $\frac{13}{16}$ " ) stainless  
steel dowel 230mm ( $9\frac{1}{16}$ " ) long  
(supplied) — 



**E550D**  
95 kg  
(209 lbs)

Ø25mm (1") hole  
85mm (3<sup>3</sup>/<sub>8</sub>") deep for  
stainless steel dowel

Dowel should be grouted with a proprietary polyester or epoxy adhesive.

POINTING - Joints should be pointed using our proprietary dry mix pointing material in accordance with the recommended instructions. Please advise your requirements for dry mix, if any, at time of placing order. Or use 1:1:6 cement/lime/sand colour-toned to suit (white cement may be necessary).

BEDDING JOINTS - Use 1:1:6 cement/lime/sand mortar.

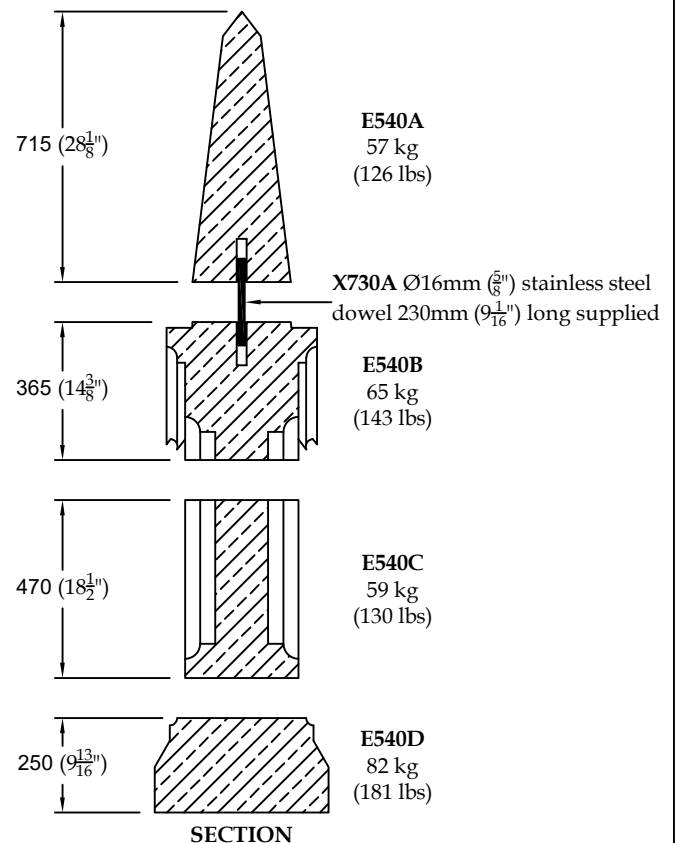
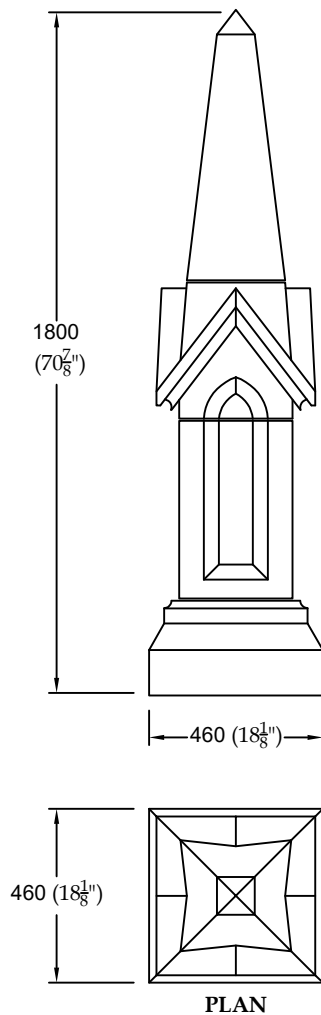
It is essential that the pedestal base is levelled on a continuous mortar bed

Foundations designed by others to suit site conditions and loadings

All dimensions exclude joints - allow 6mm ( $\frac{1}{4}$ " ) for bedding joints  
Unless otherwise stated, all materials other than stonework to be supplied by others



## GOTHIC OBELISK E540



Dowel should be grouted with a proprietary polyester or epoxy adhesive.

POINTING - Joints should be pointed using our proprietary pointing mix material in accordance with the recommended instructions.

Please advise your requirements for pointing mix, if any, at time of placing order.

Or use 1:1:6 cement/lime/sand colour-toned to suit (white cement may be necessary).

BEDDING JOINTS - Use 1:1:6 cement/lime/sand mortar

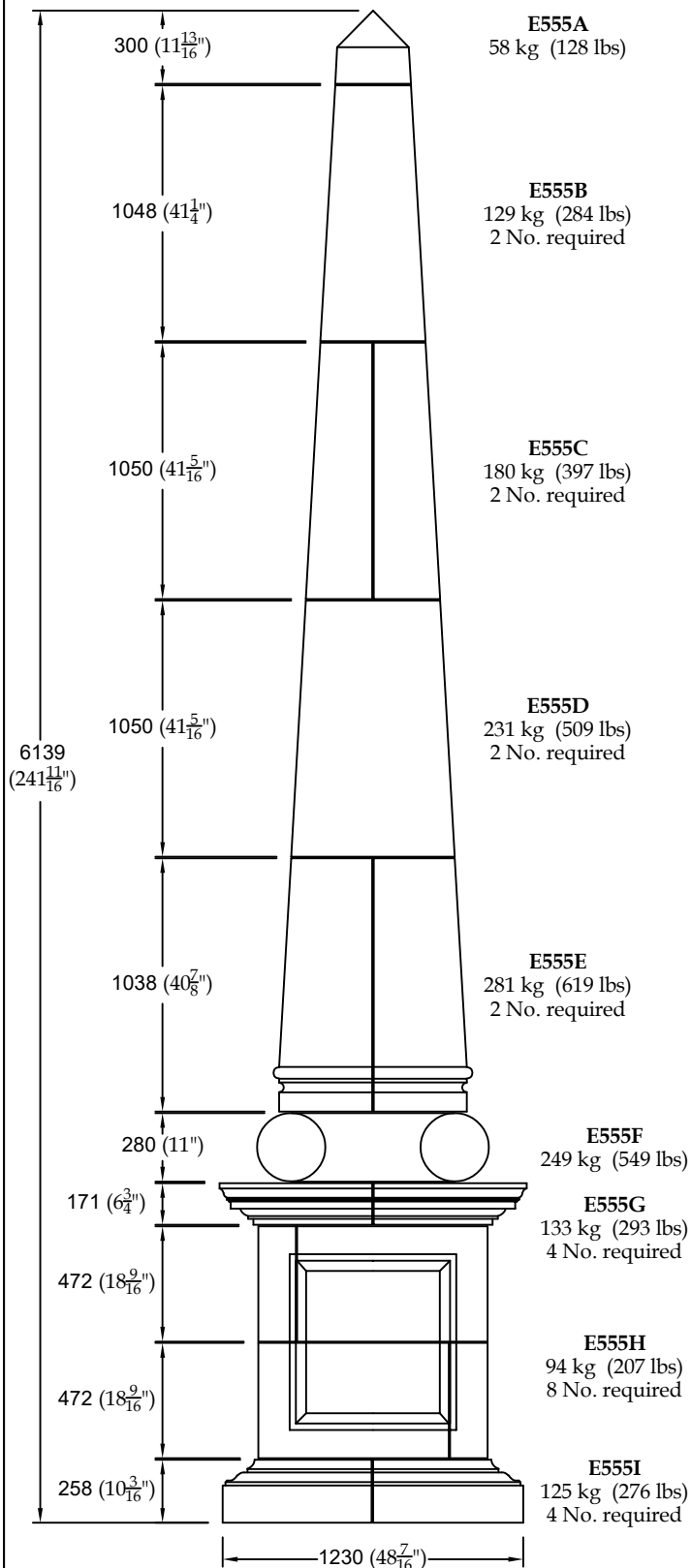
It is essential that the pedestal base is levelled on a continuous mortar bed

Foundations designed by others to suit site conditions and loadings

All dimensions exclude joints - allow 6mm (1/4") for bedding joints  
Unless otherwise stated all materials other than stonework to be supplied by others



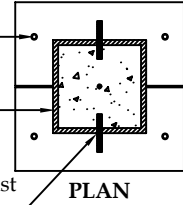
### MILLENNIUM OBELISK E555



Cast-in lifting socket (2 No. per half shaft section only) for use (if required) with M12 lifting loops, not supplied

Isolating medium (polystyrene, styrofoam, or similar), not supplied

Stainless steel ties cast into shaft sections



Stainless steel ties cast into shaft sections

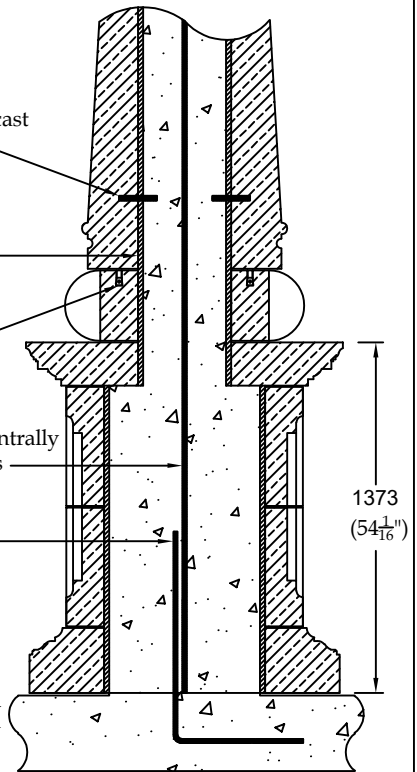
Isolating medium (polystyrene, styrofoam, or similar)

Cast-in lifting socket

Single T16 (5/8") reinforcing bar placed centrally and maintained in position with spacers

T16 (5/8") starter bar from foundation lapping 640mm (25 3/16") with main bar

Foundations to be designed by others for a dead load of 61kN and a wind moment of 12.3kNm



#### ASSEMBLY RECOMMENDATIONS

Prior to concrete infilling the vertical and horizontal joints between sections must be sealed to prevent grout loss through the joints during infilling. An isolating medium should be used to line all sections. It is important that the components in each section are securely clamped together to prevent movement during concrete infilling.

Concrete infilling should take place one section at a time.

Subsequent concrete pours should only take place after the previous concrete pour has reached an initial set.

#### CONCRETE RECOMMENDATIONS

1. Use Ø10mm (3/8") rounded gravel aggregate
2. Concrete to have a minimum strength of 25 Mpa [N/mm<sup>2</sup>] (3500 psi) at 28 days
3. Concrete to be hand compacted

BEDDING JOINTS - Use 1:1:6 cement/lime/sand mortar

POINTING - Joints should be pointed using our proprietary dry mix pointing material in accordance with the recommended instructions. Please advise your requirements for dry mix, if any, at time of placing order.

Or use 1:1:6 cement/lime/sand colour-toned to suit (white cement may be necessary).

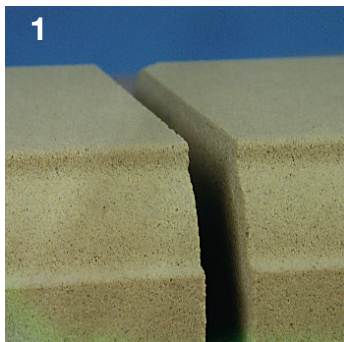
All dimensions exclude joints - allow 6mm (1/4") for vertical and bedding joints  
 All weights are approximate and should be used as a guideline only  
 Unless otherwise stated, all materials other than stonework to be supplied by others



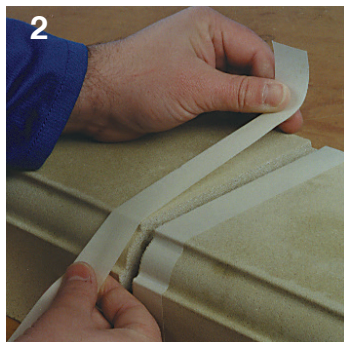
# HADDONSTONE

## HADDONSTONE POINTING RECOMMENDATIONS

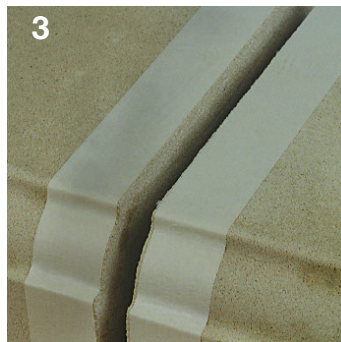
Required: pointing mix, pointing trowel, masking tape, mixing bowl, water, mist sprayer.  
Please note: all text and photographs relate to Haddonstone semi-dry pointing mix.



**1**  
Before pointing ensure each 6mm (1/4") joint is free from loose particles. Avoid pointing in extreme conditions, particularly wet and cold.



**2**  
Apply masking tape to both sides of the joint, keeping the tape approximately 1mm (1/16") from the edge of the joint.



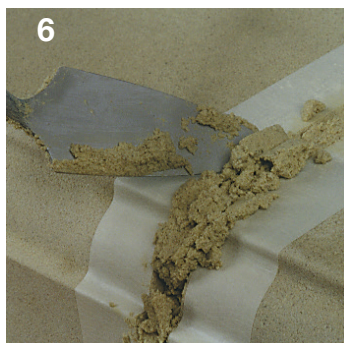
**3**  
The joint is now ready to start pointing.



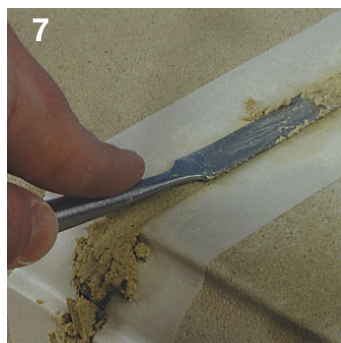
**4**  
Carefully add small quantities of water to the Haddonstone pointing mix, mixing thoroughly to ensure the water is fully dispersed.  
*\*See note below.*



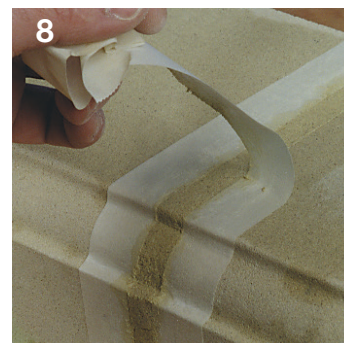
**5**  
The Haddonstone pointing mix is ready to use when it has the consistency of damp sand. *\*See note below.*



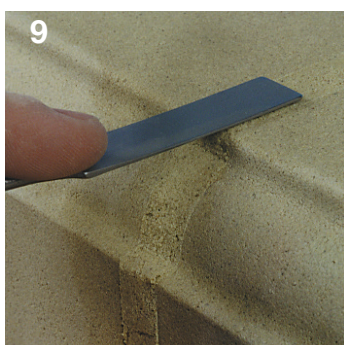
**6**  
Scoop the mix into the joint, pressing with a trowel to ensure an even fill.



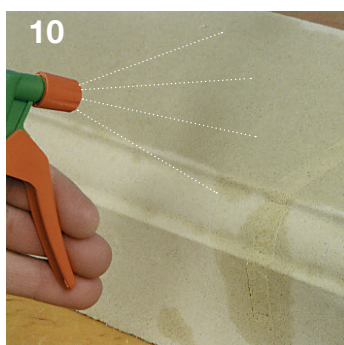
**7**  
Smooth the pointing mix to the profile of the stone, removing any excess pointing mix.



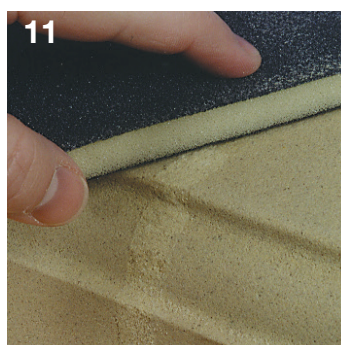
**8**  
Carefully remove the masking tape.



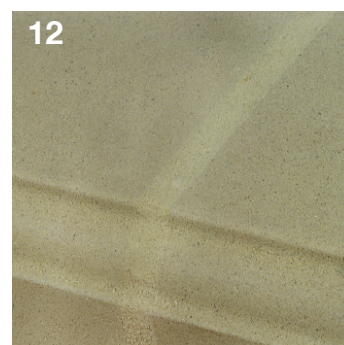
**9**  
If necessary trowel over the joint once more to ensure a flush finish.



**10**  
Apply a fine and even mist of water to the joint to prevent drying out.



**11**  
Any mix residue may be rubbed away with fine abrasive paper 2-3 days after completion.



**12**  
The finished joint.

*\* NOTE: It would be advantageous to use a waterproofing additive in the mixing water (SBR or other proprietary mortar admixture). The use of too much water can lead to the pointing mix colour and texture becoming unsightly, and the possibility of the mix bleeding into the adjacent cast stone.*

### Haddonstone Ltd

The Forge House, East Haddon, Northampton NN6 8DB, England  
Telephone: 01604 770711 Fax: 01604 770027 [info@haddonstone.co.uk](mailto:info@haddonstone.co.uk)

### Haddonstone (USA) Ltd

32207 United Avenue, Pueblo, CO 81001, USA  
Telephone: 719 948 4554 Fax: 719 948 4285 [stone@haddonstone.com](mailto:stone@haddonstone.com)

[www.haddonstone.com](http://www.haddonstone.com)



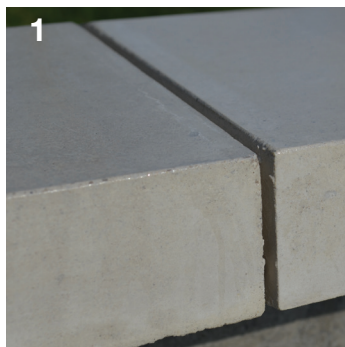


# HADDONSTONE

## TECSTONE POINTING RECOMMENDATIONS

Required: pointing mix, pointing trowel, masking tape (if required), mixing bowl, water, sponge.

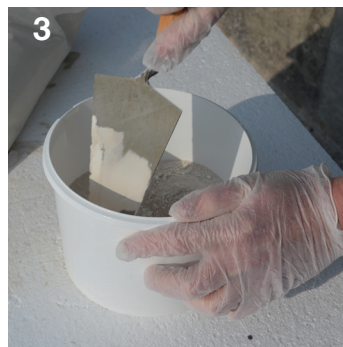
Please note: all text and photographs relate to TecStone pointing mix.



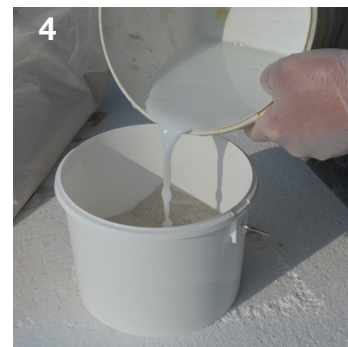
1  
Before pointing ensure each 6mm ( $\frac{1}{4}$ " ) joint is free from loose particles. Avoid pointing in extreme conditions, particularly wet and cold.



2  
The TecStone pointing mix is supplied as separately bagged cement and aggregate with an information leaflet.



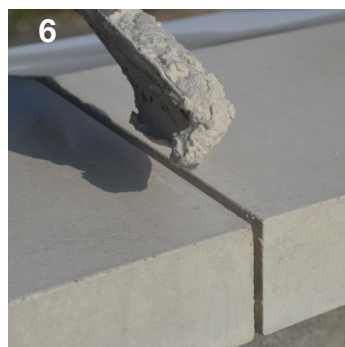
3  
The cement and aggregate should first be mixed together dry in the ratio of 1 part cement to 4.5-6.5 parts aggregate.



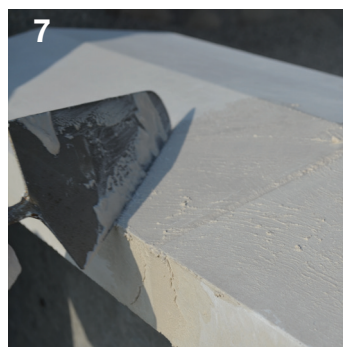
4  
Carefully add small quantities of water to the TecStone pointing mix, mixing thoroughly to ensure the water is fully dispersed. \*See note below.



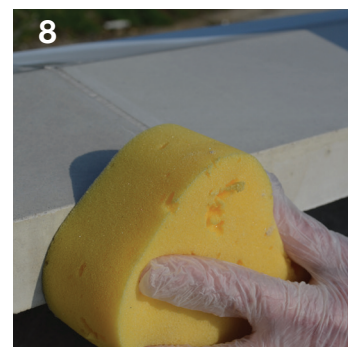
5  
The TecStone pointing mix is ready to use when it has the consistency of putty. \*See note below.



6  
Scoop the mix into the joint, pressing with a trowel to ensure an even fill.



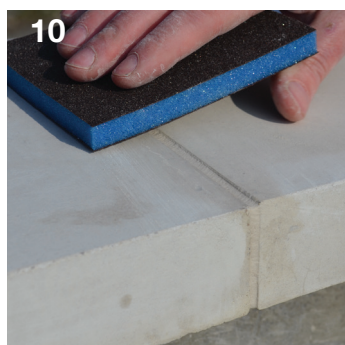
7  
Smooth the pointing mix to the profile of the stone, removing any excess pointing mix.



8  
Wipe over the surface of the joint and surrounding area with a dampened sponge to remove all surplus pointing material off the surrounding areas and ensure a flush finish to the joint.



9  
If necessary trowel over the joint once more to ensure a flush finish.



10  
Any mix residue may be rubbed away with fine abrasive paper 2-3 days after completion.



11  
The finished joint.

\* NOTE: It would be advantageous to use a waterproofing additive in the mixing water (SBR or other proprietary mortar admixture). The use of too much water can lead to the pointing mix colour and texture becoming unsightly, and the possibility of the mix bleeding into the adjacent cast stone.

### Haddonstone Ltd

The Forge House, East Haddon, Northampton NN6 8DB, England  
Telephone: 01604 770711 Fax: 01604 770027 [info@haddonstone.co.uk](mailto:info@haddonstone.co.uk)

### Haddonstone (USA) Ltd

32207 United Avenue, Pueblo, CO 81001, USA  
Telephone: 719 948 4554 Fax: 719 948 4285 [stone@haddonstone.com](mailto:stone@haddonstone.com)

[www.haddonstone.com](http://www.haddonstone.com)